

NDV **SANITARY TYPE** **PRODUCTS FOR** **MEDICAL PLANT**

Catalog No.CE107-02



FOR TABLETS DISCHARGE

D A M P E R

FOR POWDER AND GRANULAR DISCHARGE

B U T T E R F L Y V A L V E

NIPPON DAIYA VALVE CO., LTD.

FOR TABLETS DISCHARGE

DAMPER

- The main parts are made of stainless steel and #300 buff grind finished on inner/outer surfaces, that provides no adhesion of tablets and are excellent in washability.
- Safe discharging of tablets ensured by optimum shape and structure preventing the tablets from remaining.
- The tables are fed while the damper is closed and the damper is opened for discharging. The structure is designed in such a way that the tablets are not crushed.
(Tablets may be damaged if close operation is done while discharging tablets.)
- A stopper at the closing position securely maintains the precise position.

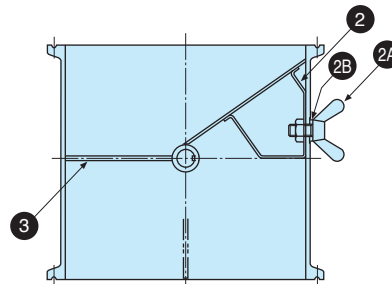
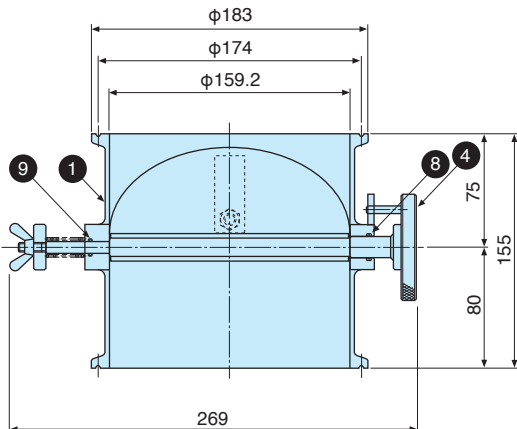
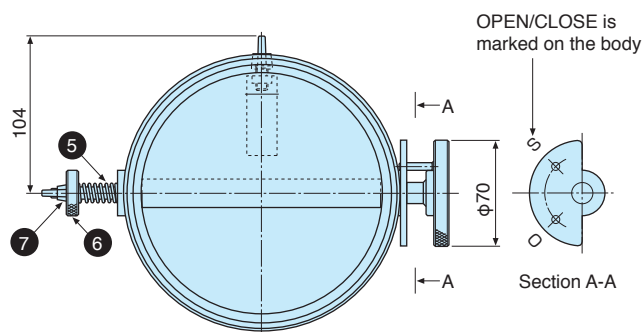


Standard Specifications

Type	DC507D
Nominal Size	150 (6.5S)
Connection	Ferrule type (Based on ISO / IDF)

Outline Drawing and Dimensions

(Unit:mm)



Material

No.	Name	Material	Q'ty
1	Body	SUS304	1
2	Fixed Plate	SUS304	1
2A	Wing Bolt	SUS304	1
2B	Washer	PTFE	1
3	Disc	SUS304	1
4	Stem	SUS304	1
5	Spring	SUS304	1
6	Spring Fixing Nut	SUS304	1
7	Wing Nut	SUS304	1
8	O Ring	Silicone Rubber (white)	1
9	O Ring	Silicone Rubber (white)	1

FOR POWDER AND GRANULAR DISCHARGE

BUTTERFLY VALVE

- The main parts are made of stainless steel and #400 buff grind finished on inner/outer surfaces, that provides no adhesion of powder & granular product and excellent in washability.
- Light-weight design provides the ease of attaching and detaching on the containers and piping.
- Adoption of clamp type allows the quick assembly/disassembly and easy washing.

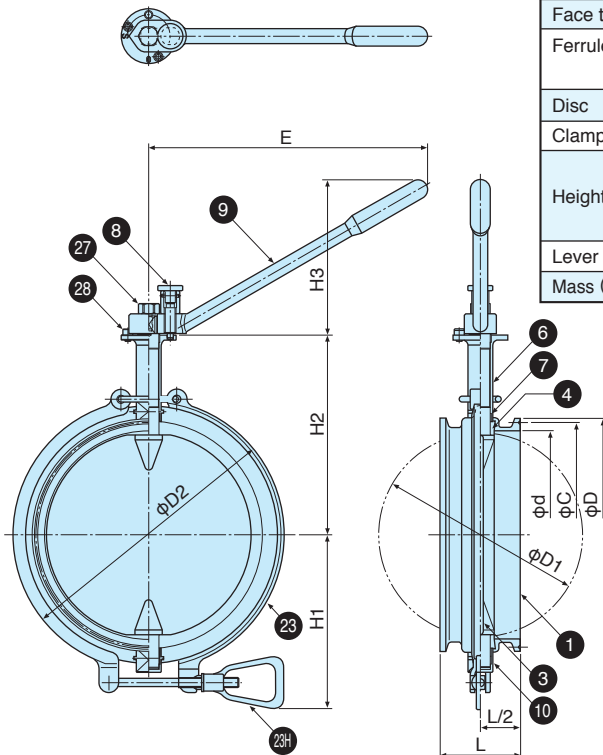
Standard Specifications

Type	DC507C-SI
Nominal Size (DN)	100-300
Valve Seat Air-Tightness	3kPa
Shell Test	0.05MPa
Working Temperature	Ordinary Temperature (Washable with hot water up to 80°C)
Connection Standard	Ferrule Type (DN100-200: Based on ISO/IDF) (DN250, 300: for discussion)



* Automatic Valve: Contact us for manufacturing of pneumatically operated ON-OFF valves.
* Applicable only for powder & granular discharging.

Outline Drawing



Dimension

Unit:mm

DN		100 (4.5S)	125 (5.5S)	150 (6.5S)	200	250	300
Diameter	d	108.3	133.8	159.2	208.3	259.4	309.5
Face to Face	L	60	60	80	80	80	80
Ferrule	D	130	155	183	233.5	290	344
	C	122	146	174	225	-	-
Disc	D1	105.6	131.1	156.2	204.3	255.3	305.3
Clamp	D2	152	178	224	273	325	378
	H1	104	117	150	174	203	230
Height	H2	138	151	176	201	227	253
	H3	101	101	157	157	206	206
	E	180	180	280	280	365	365
Mass (approx)	kg	2.5	3	6	7.5	11	15

Material

* Please contact us if you need a special material.

No.	Name	Material	Q'ty
1	Body	SCS13A	2
3	Disc	SUS304	1
4	Liner	Silicone Rubber	1
6	Joint(Neck)	SCS13A	1
7	Bearing	PTFE	4
8	Index Plunger	SUS	1
9	Hand Lever	SCS13A	1
10	Bearing Case	SCS13A	1
23	Clamp	SCS13A	1 set
23H	Tightening Nut	SCS13A	1
27	Lever Fixing Bolt	SUS304	1
28	Cap Screw	SUS304	2

●The ISO 9001·14001 certified



CAUTION

Specifications and performance figures of products contained in this catalog are based on the design calculations, in-house tests, actual records of product application, and the official standards and specifications. They are presented as the user guide on the use of product concerned under general service conditions. Users intending to use the product under a special condition are required to receive engineering advice from this company in advance or to make their own studies and evaluation to verify performance on their own responsibility. This company shall not be liable for any damages, material or human, that may arise without following this procedure. Inasmuch as full care was taken in editing this catalog, users are kindly requested to make contact with this company for any questions or discrepancies found. This catalog is subject to change without notice for the purpose of correcting error, supplementing or improving insufficient content, updating the content to the improved product performance, design change, discontinuation of product and other reasons. Revised version automatically invalidates catalogs issued prior to the current version. When you select products for possible order placement, please check the issuance code number on the back of your catalog and verify with this company that it is the latest version.

NDV NIPPON DAIYA VALVE CO., LTD.

Head Office	1-3-22, Hiro-machi, Shinagawa-ku, Tokyo 140-0005	
Tokyo Sales Department	TEL.TOKYO (03) 3490-4801	FAX.TOKYO (03) 3490-7950
International Sales Department	TEL.TOKYO (03) 5434-5330	FAX.TOKYO (03) 5434-5331
Osaka Branch	Takakura Bldg., 2-5-9, Awaji-machi, Chuo-ku, Osaka-shi, Osaka 541-0047	
	TEL.OSAKA (06) 6203-7721	FAX.OSAKA (06) 6222-5895
Nagoya Branch	3-2108, Nakajimashincho, Nakagawa-ku, Nagoya-shi, Aichi 454-0932	
	TEL.AICHI (052) 354-3171	FAX.AICHI (052) 354-3174
Okayama Branch	Ima8-chome No.2 Bldg., 3-35, Ima8-chome, Kita-ku Okayama-shi, Okayama 700-0975	
	TEL.OKAYAMA (086) 241-2669	FAX.OKAYAMA (086) 244-3540
Kitakyushu Branch	2-2-4, Tate-machi, Kokurakita-ku, Kitakyushu-shi, Fukuoka 803-0818	
	TEL.FUKUOKA (093) 571-2438	FAX.FUKUOKA (093) 591-3277

<http://www.ndv.co.jp>